



**unifiedpost**  
GROUP

# Moving the Message client from one system to another

---



## 1.

It is easy to move the Message client from one system to another by copying the configuration files. The ftp.properties and the keystore.jks files have to be moved from the source system to the target system. File locations are:

- in a 32 bit system C:\Program Files\Basware\Basware Message
- in a 64 bit system C:\Users\Public\Basware\Basware Message  
Or C:\ProgramData\Basware\Basware Message

Moreover the Message folder is also needed (located usually in C:\ root folder). If you've used the Message on a local machine set it on the target system the same way. (C:\ root folder)

Download the right version of the Message from the Unifiedpost homepage.

LINK: <https://unifiedpost.hu/1stbp-message-letoltes/>

Be careful: for 32 bit depth systems use the 32 bit installation and for systems with 64 bit depth the 64 bit installation.

## 2. Choose language



## 3. The Message wizard will guide you until the finish

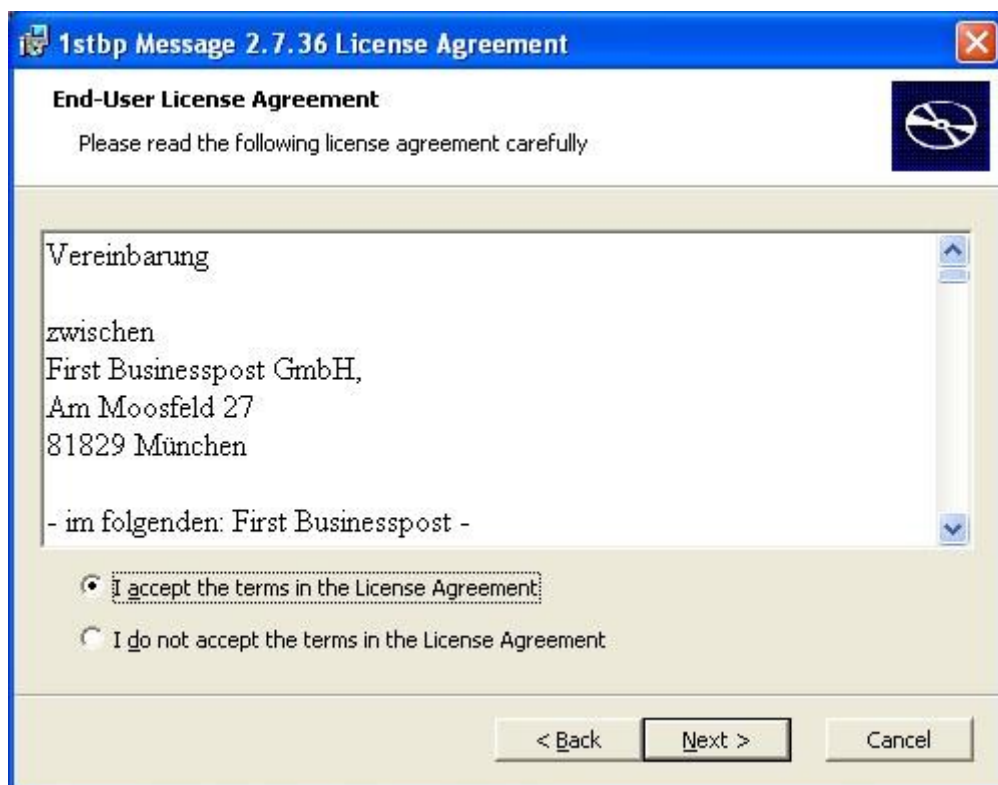




#### 4. Choose country

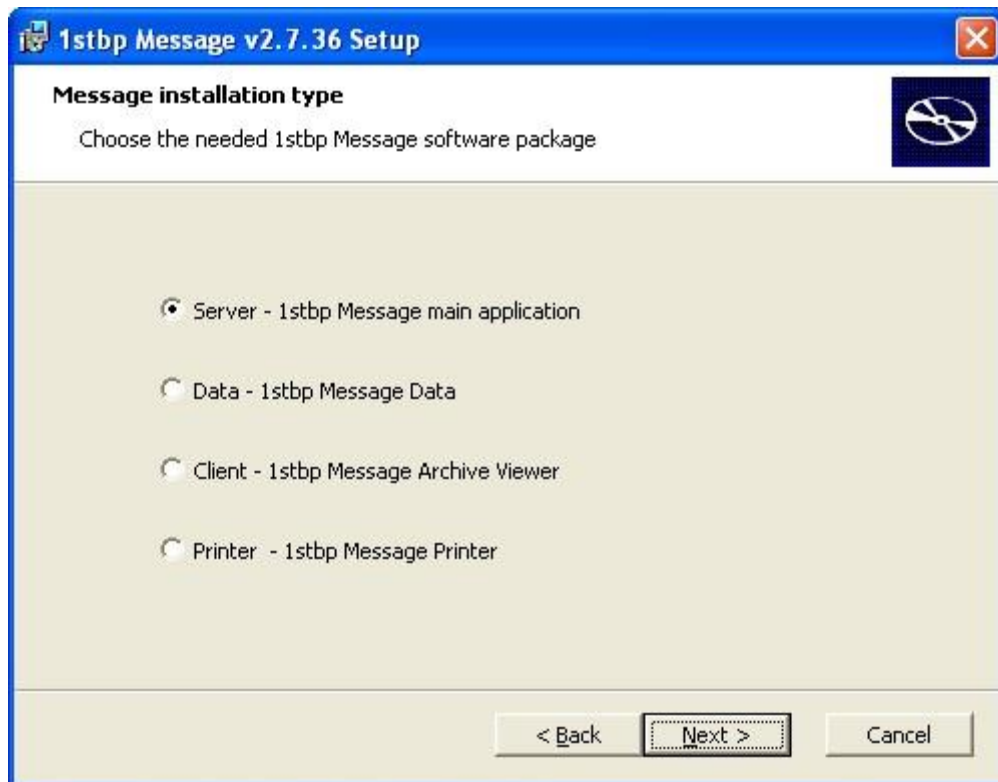


#### 5. Accept the terms

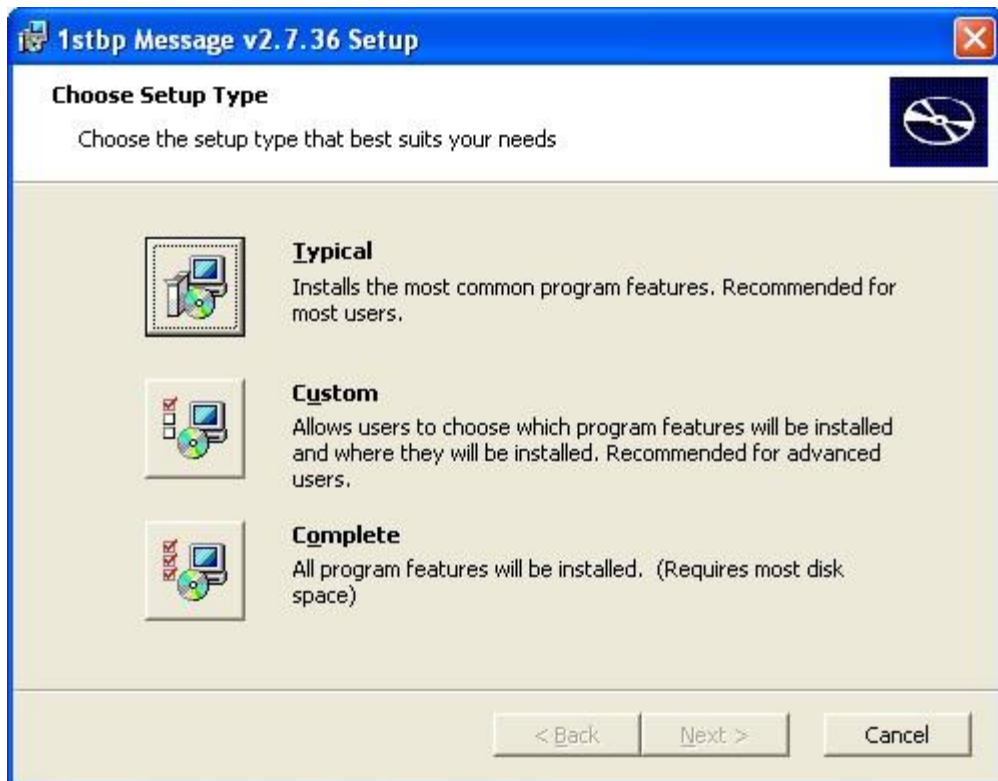




## 6. Choose Server installation

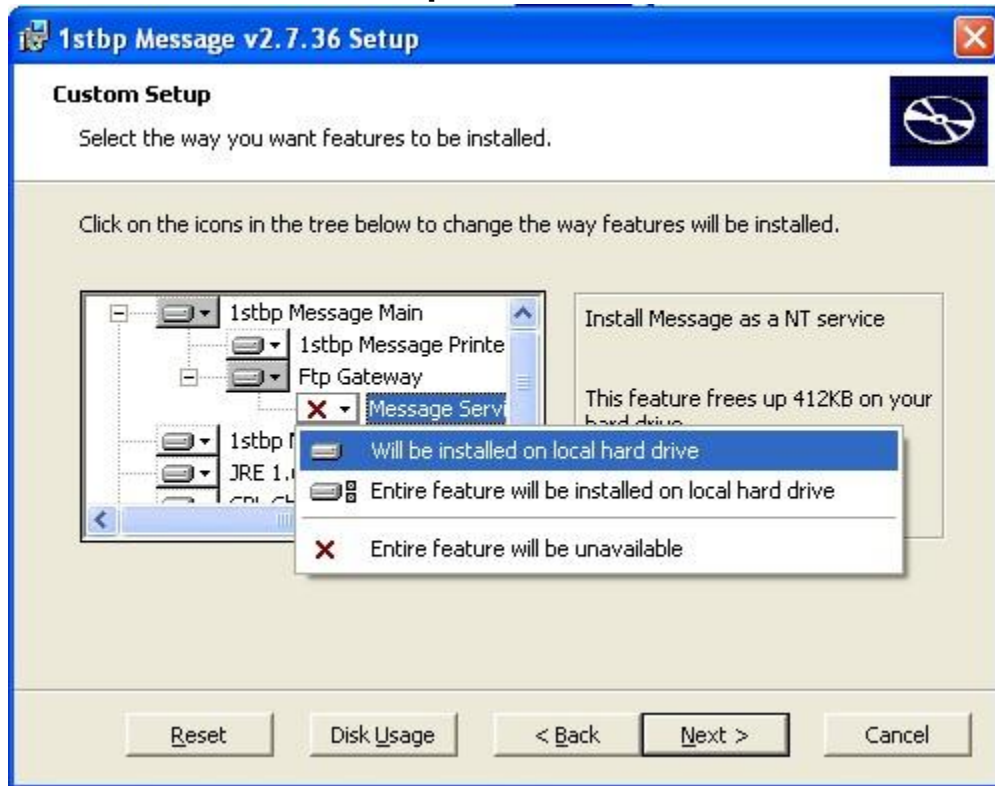


## 7. Choose Custom mode



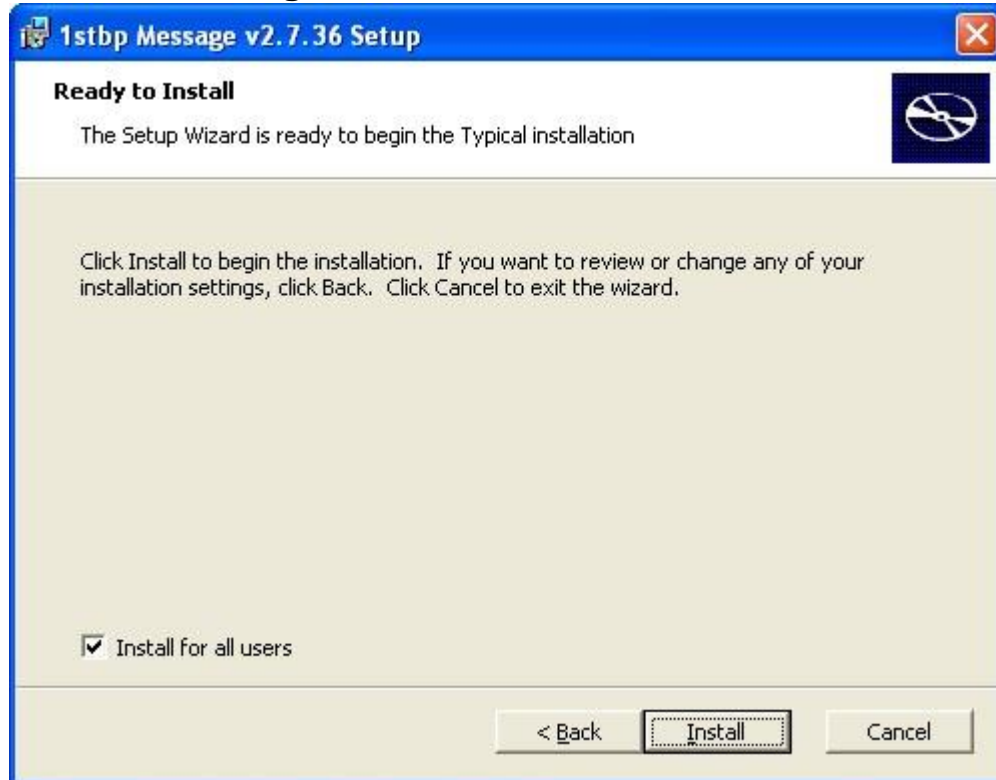


8. If you would like to run the Message as a Windows Service, enable Message Service option. If you send the invoices in .pdf format enable XPDF option too. Otherwise click on Next.





**9. Click on install to get it started.**

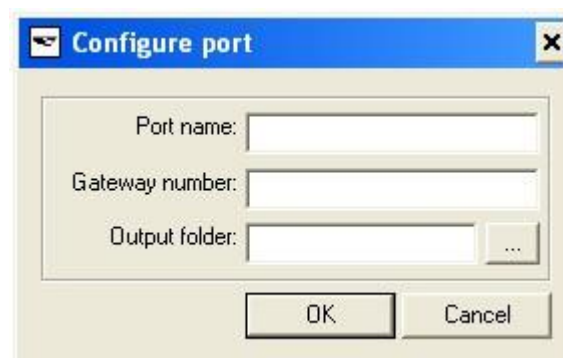


**10. Port configuration**

(Port name: Message

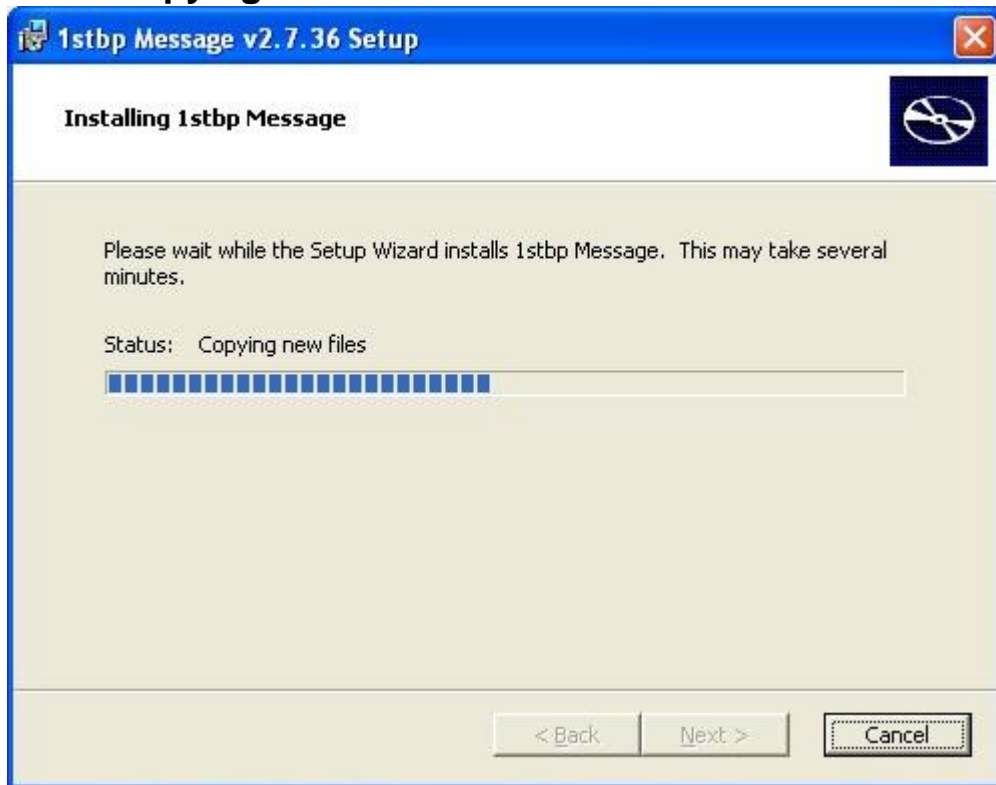
Gateway number: Depends on country, Hungary: 3600, Slovakia and Czech Republic: 4210

Output folder: c:\Message\Print ) :





## 11. Wizard is copying the files



## 12. Finishing





**13. Copy the ftp.properties and the keystore.jks files to the proper location.**

- in a 32 bit system C:\Program Files\Basware\Basware Message
  - in a 64 bit system C:\Users\Public\Basware\Basware Message
- Or C:\ProgramData\Basware\Basware Message

**14. Run Message client.**